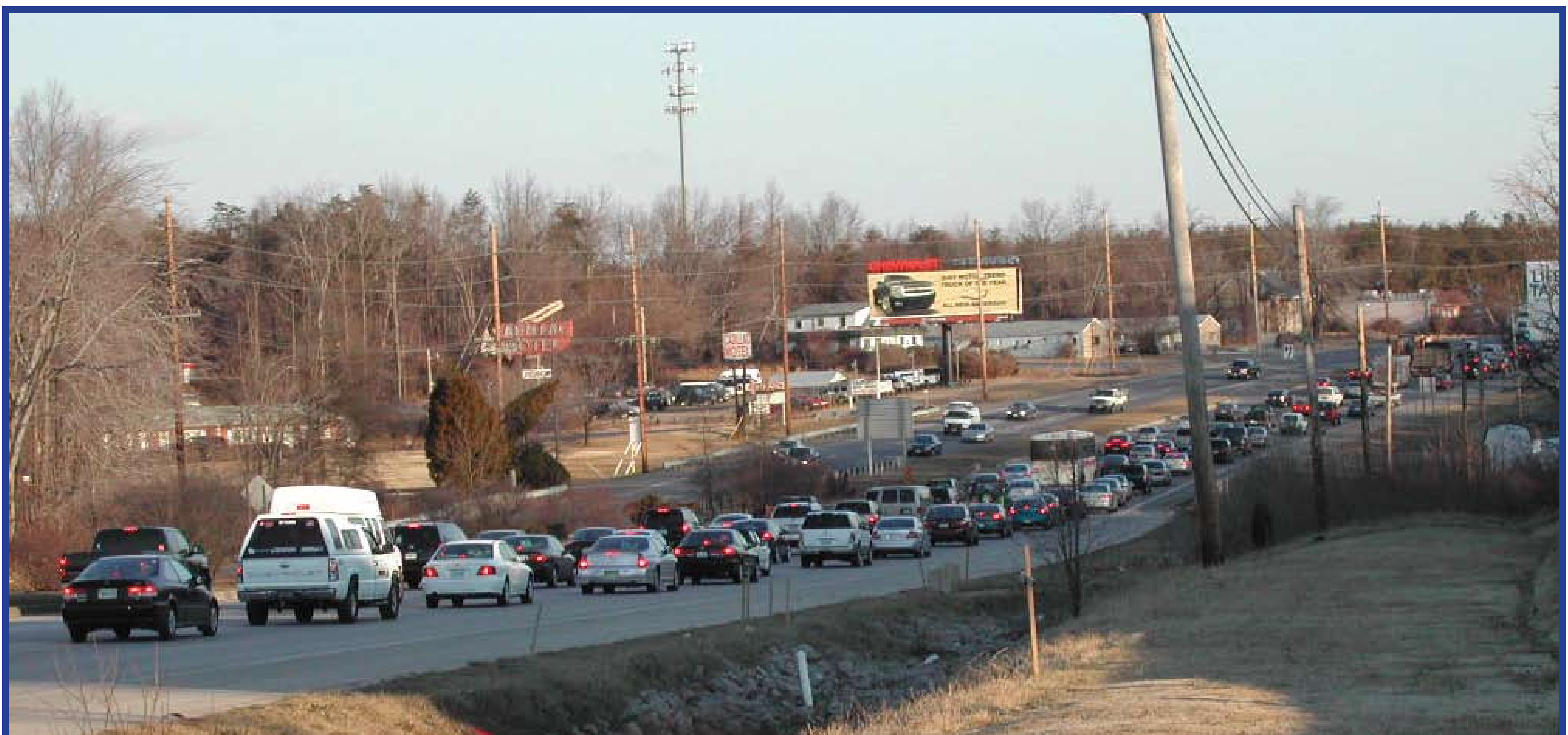


Purpose and Need

Purpose

- Improve local traffic operations along US 301 in the Waldorf area
- Facilitate the safe and efficient flow of through and commuter traffic between the Waldorf area and the Washington metropolitan area
- Provide cost-effective and environmentally sensitive multi-modal transportation infrastructure to support existing and future travel demand, land use, and development efforts that are consistent with smart growth planning policies, and promote and secure environmental stewardship





Need

Mobility

- Failing signalized intersections in the project area between the MD 5 interchange at T.B. and Washington Avenue are projected to increase from six in 2007 to 16 by 2030
- Average daily traffic volumes along US 301 are projected to increase up to 35% between 2007 and 2030 (No-Build)
- Heavy travel demand accessing or crossing US 301

Safety

- Sections of US 301 have significantly higher rear-end and truck-related crash rates than the statewide average
- Findings indicate high traffic volumes are creating “stop and go” conditions

Access Control and Use

- US 301 serves many functions:
 - local connector
 - regional commuter route
 - inter-state route
 - supports major regional shopping and services
- Numerous driveways and access points to commercial properties along US 301

Land Use

- Southern Maryland experienced a 143% increase in population between 1970 and 2000
- Projected population growth of 65% between 2000 and 2030
- Corridor runs through two Priority Funding Areas – Waldorf and Brandywine

We welcome your comments regarding the Purpose and Need Statement. Copies of this document are available on our website or by request.

